



BOSCH

Invented for life



CISS - Connected Industrial Sensor Solution

Firmware Update – Operating Instructions

Table of contents

1. Download the Firmware Update	3
2. Extract the Firmware Update File	3
3. Copy the extracted Firmware Update File to the CISS Sensor Device	3
4. Proceed the Update	3
5. Validate the installed firmware version on the CISS device	4

1. Download the Firmware Update

The firmware update package will be provided on the Bosch Connected Devices and Solutions website.

<https://www.bosch-connectivity.com/media-and-downloads/>

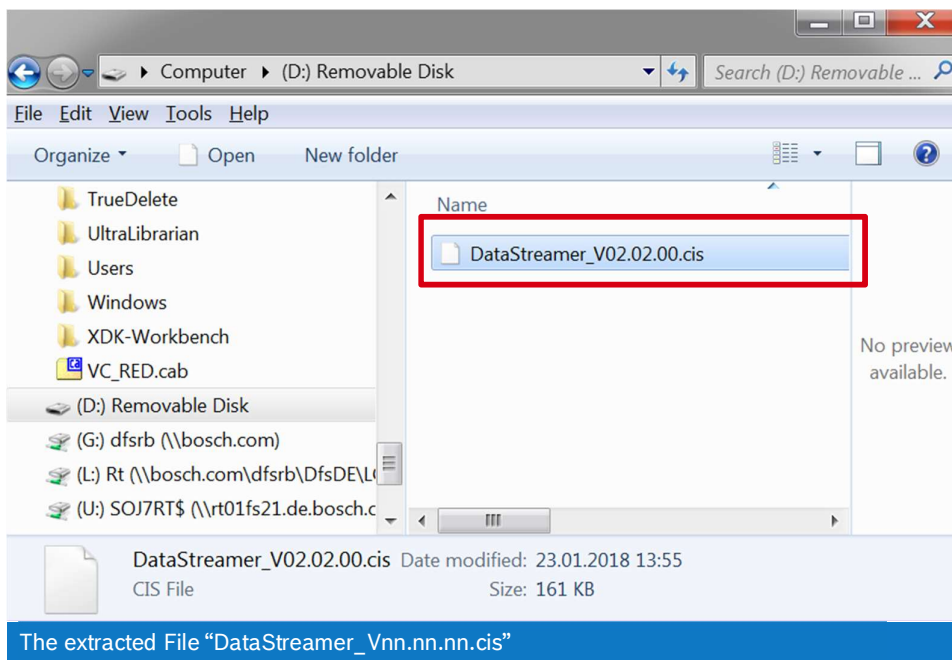
2. Extract the Firmware Update File

Use your extract tool to unzip the firmware .zip file to your local file system.



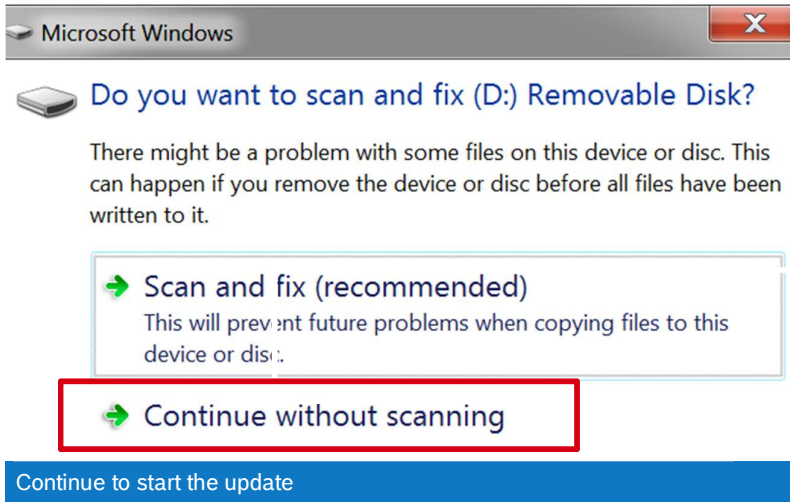
3. Copy the extracted Firmware Update File to the CISS Sensor Device

- ▶ Plug the CISS into the computer, which contains the firmware update file.
- ▶ The CISS will be visible as a USB storage device.
- ▶ Copy the extracted File "DataStream_Vnn.nn.nn.cis" to the CISS device.



4. Proceed the Update

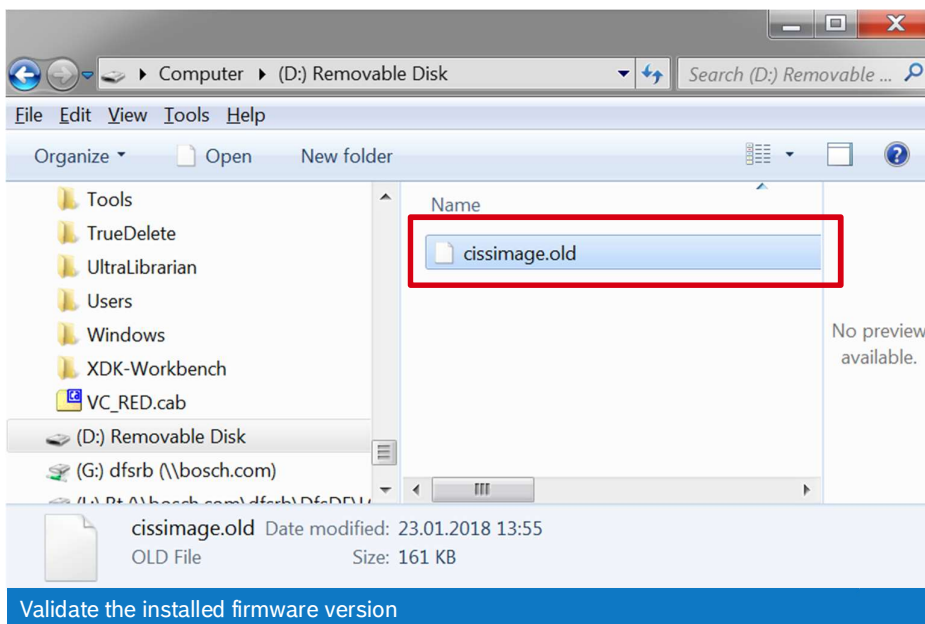
- ▶ Unplug the device.
- ▶ After approximately 5 seconds, plug in the CISS device again.
- ▶ Wait until the following screen shows up.



- Click “continue without scanning”.

5. Validate the installed firmware version on the CISS device

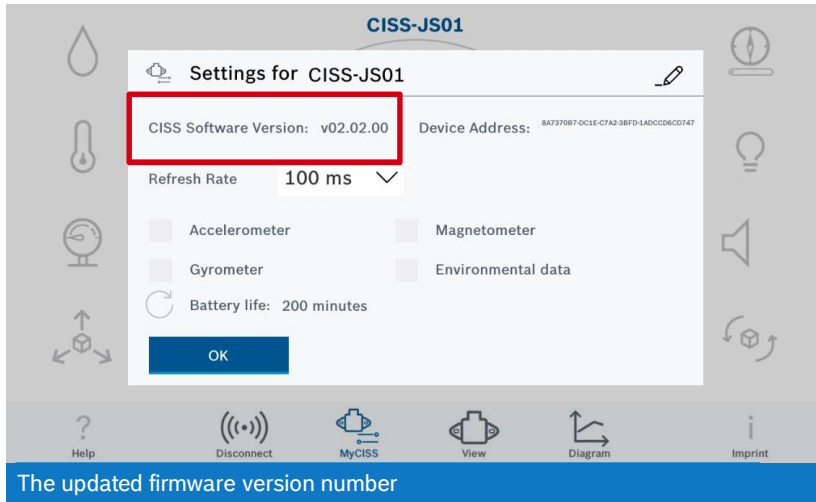
- Check, if the name after the update has changed to “cissimage.old”



- If yes, the update has been successful.
- If not, try to repeat after step 3.

The firmware version number is visible in the “Virtual CISS Mobile App”, in the settings menu.

The “Virtual CISS Mobile App” is available in the Apple App Store / Google Play Store.



For further assistance, please refer to <http://www.bosch-connectivity.com/CISS> or e-mail to: support@bosch-connectivity.com

Bosch Connected Devices and Solutions GmbH

Ludwig-Erhard-Straße 2
72760 Reutlingen
Germany

Postfach 13 42
72703 Reutlingen
Germany

support@bosch-connectivity.com

www.bosch-connectivity.com